

# Psalm 89 (90) CAN

Lord, you have been our dwelling place in all generations

Kate Keefe

## Response

Dm C F C7 F C B $\flat$  C F

Fine

Musical score for the Response section. It consists of three staves: Voice, Recorder, and Piano. The key signature is one flat (Bb) and the time signature is 3/4. The lyrics are: "Lord, you have been our dwelling place in all generations." The piano accompaniment features a steady bass line and chords that support the vocal melody. The Recorder part provides a melodic line that follows the vocal line.

## Verse 1

F C F C F

Musical score for Verse 1. It consists of three staves: Voice, Recorder, and Piano. The key signature is one flat (Bb) and the time signature is 3/4. The lyrics are: "You turn us back into dust and say 'Go'". The piano accompaniment features a steady bass line and chords that support the vocal melody. The Recorder part provides a melodic line that follows the vocal line.

14

B $\flat$  B $\flat$  F C Dm Gm C

back, children of the earth.' To your eyes a

Rec.

Pno.

19

F C F C F

thou - sand years are like yes-ter-days, come and

Rec.

Pno.

24

C F B $\flat$  C7 F C F C D.C.

gone, no more than a watch in the night.

Rec.

Pno.

29

F C F C

Verse 2



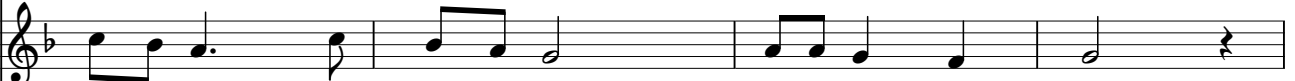
You sweep us away like a dream, like

Verse 3



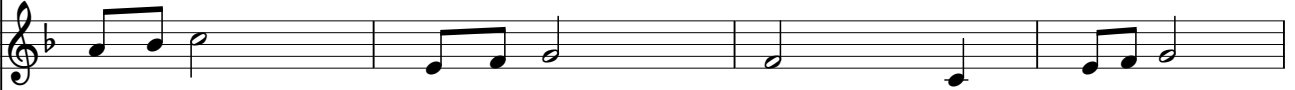
Make us know the shortness of our life

Verse 4

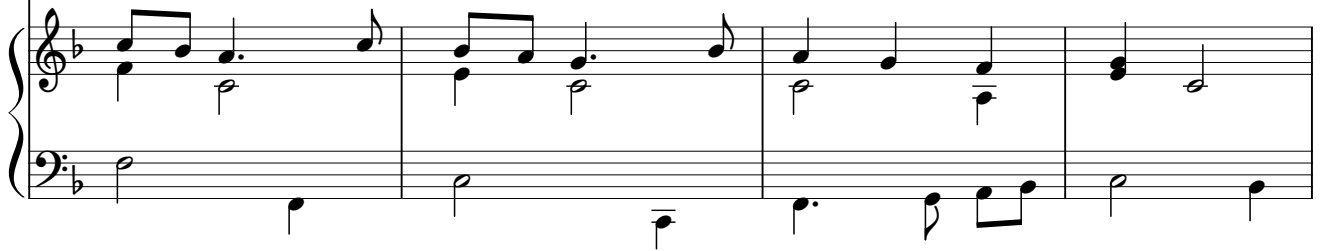


In the morning, fill us with your love;

Rec.



Pno.



33

F Bb Bb F C

Verse 2



grass which springs up in the morning.

Verse 3



that we may gain wisdom of heart.

Verse 4

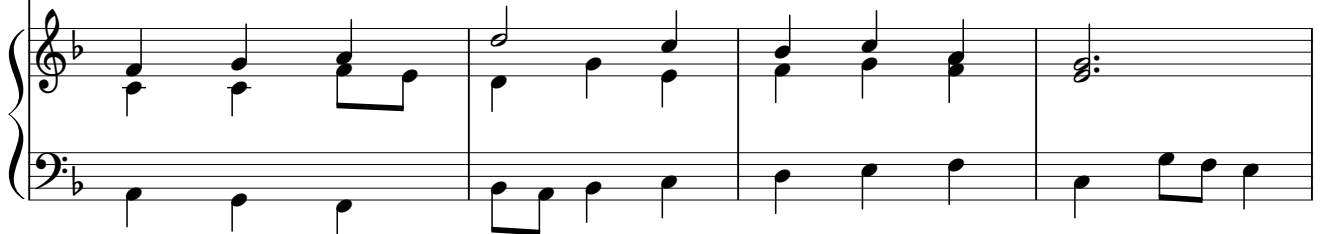


we shall exult and rejoice all our days.

Rec.



Pno.



37 F C F C F

**Verse 2** in the morn - ing it springs up and flow - ers;

**Verse 3** Lord, re - lent! Is your an - ger for ev - er?

**Verse 4** Let the fa - vour of the Lord be up - on us:

Rec.

Pno.

41 B $\flat$  C7 F C F C D.C.

**Verse 2** by eve - ning it with - ers and fades.

**Verse 3** Show pi - ty to your ser - vants.

**Verse 4** give suc - cess to the work of our hands!

Rec.

Pno.